



US007718033B1

(12) **United States Patent**
Kostic et al.

(10) **Patent No.:** **US 7,718,033 B1**
(45) **Date of Patent:** **May 18, 2010**

(54) **ONE-STEP METHOD FOR THE PRODUCTION OF NANOFLUIDS**

(75) Inventors: **Milivoje Kostic**, Chicago, IL (US);
Mihajlo Golubovic, Chicago, IL (US);
John R. Hull, Downers Grove, IL (US);
Stephen U. S. Choi, Naperville, IL (US)

(73) Assignee: **The United States of America as represented by the United States Department of Energy**, Washington, DC (US)

(*) Notice: Subject to any disclaimer, the term of this patent is extended or adjusted under 35 U.S.C. 154(b) by 979 days.

(21) Appl. No.: **11/456,944**

(22) Filed: **Jul. 12, 2006**
(Under 37 CFR 1.47)

(51) **Int. Cl.**
B01D 1/22 (2006.01)
B01D 3/08 (2006.01)
B01D 3/10 (2006.01)
B01D 3/28 (2006.01)

(52) **U.S. Cl.** **159/49**; 159/6.3; 159/7; 159/11.2; 159/13.2; 159/44; 159/DIG. 16; 202/205; 202/238; 203/1; 203/89; 203/91; 165/58; 165/68; 165/89; 252/74; 196/112; 196/114; 208/360; 208/366; 427/81

(58) **Field of Classification Search** 159/6.3, 159/7, 11.2, 12, 13.2, 44, 49, DIG. 15, DIG. 16, 159/DIG. 23; 202/205, 236, 238; 203/1, 203/89, 91, 100; 252/74; 165/58, 68, 89, 165/90, 201; 568/840; 196/112, 114; 208/360, 208/366; 427/81
See application file for complete search history.

(56) **References Cited**

U.S. PATENT DOCUMENTS

3,464,478	A *	9/1969	Ueda et al.	159/6.3
3,617,225	A *	11/1971	Kuehne et al.	422/134
4,090,916	A *	5/1978	Papafingos et al.	159/9.2
5,409,576	A *	4/1995	Tleimat	202/174
5,534,113	A *	7/1996	Quigley et al.	159/49
6,221,275	B1 *	4/2001	Choi et al.	252/74
2008/0009434	A1 *	1/2008	Reches et al.	514/2

* cited by examiner

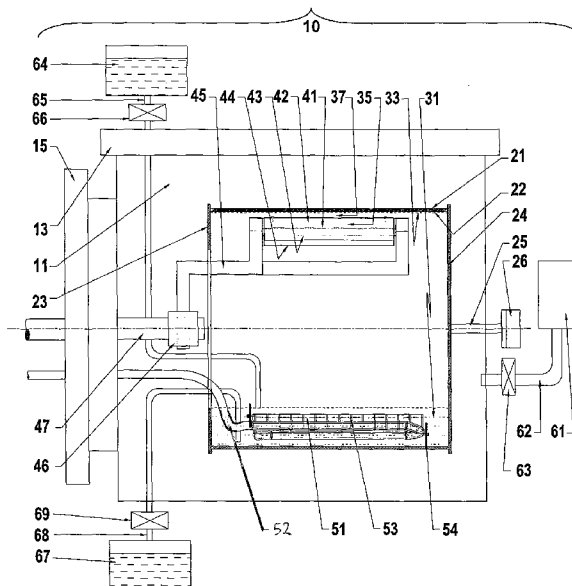
Primary Examiner—Virginia Manoharan

(74) *Attorney, Agent, or Firm*—Brian J. Lally; Mark P. Dvorscak; Paul A. Gottlieb

(57) **ABSTRACT**

A one step method and system for producing nanofluids by a particle-source evaporation and deposition of the evaporant into a base fluid. The base fluid such (i.e. ethylene glycol) is placed in a rotating cylindrical drum having an adjustable heater-boat-evaporator and heat exchanger-cooler apparatus. As the drum rotates, a thin liquid layer is formed on the inside surface of the drum. A heater-boat-evaporator having an evaporant material (particle-source) placed within its boat evaporator is adjustably positioned near a portion of the rotating thin liquid layer, the evaporant material being heated thereby evaporating a portion of the evaporant material, the evaporated material absorbed by the liquid film to form nanofluid.

23 Claims, 10 Drawing Sheets



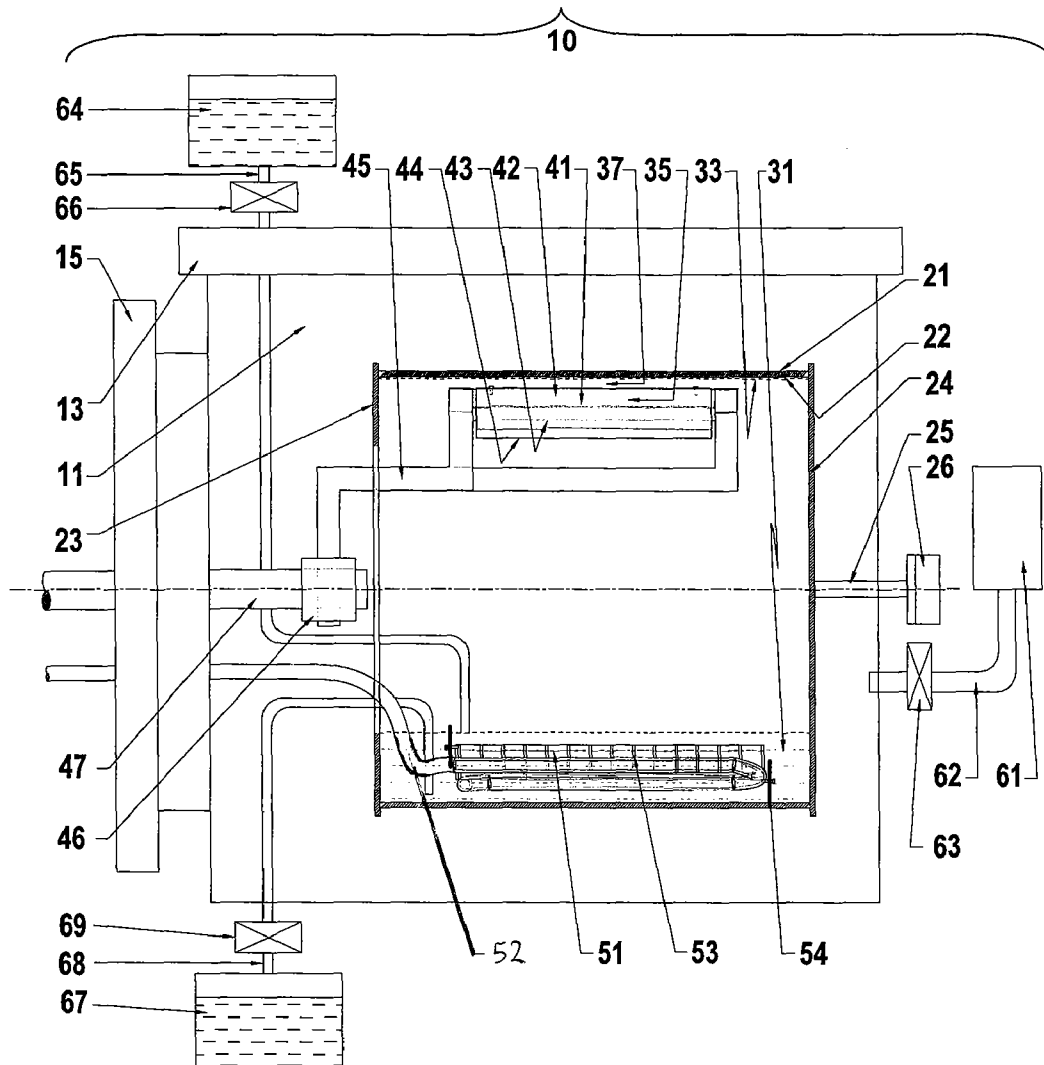


FIG 1

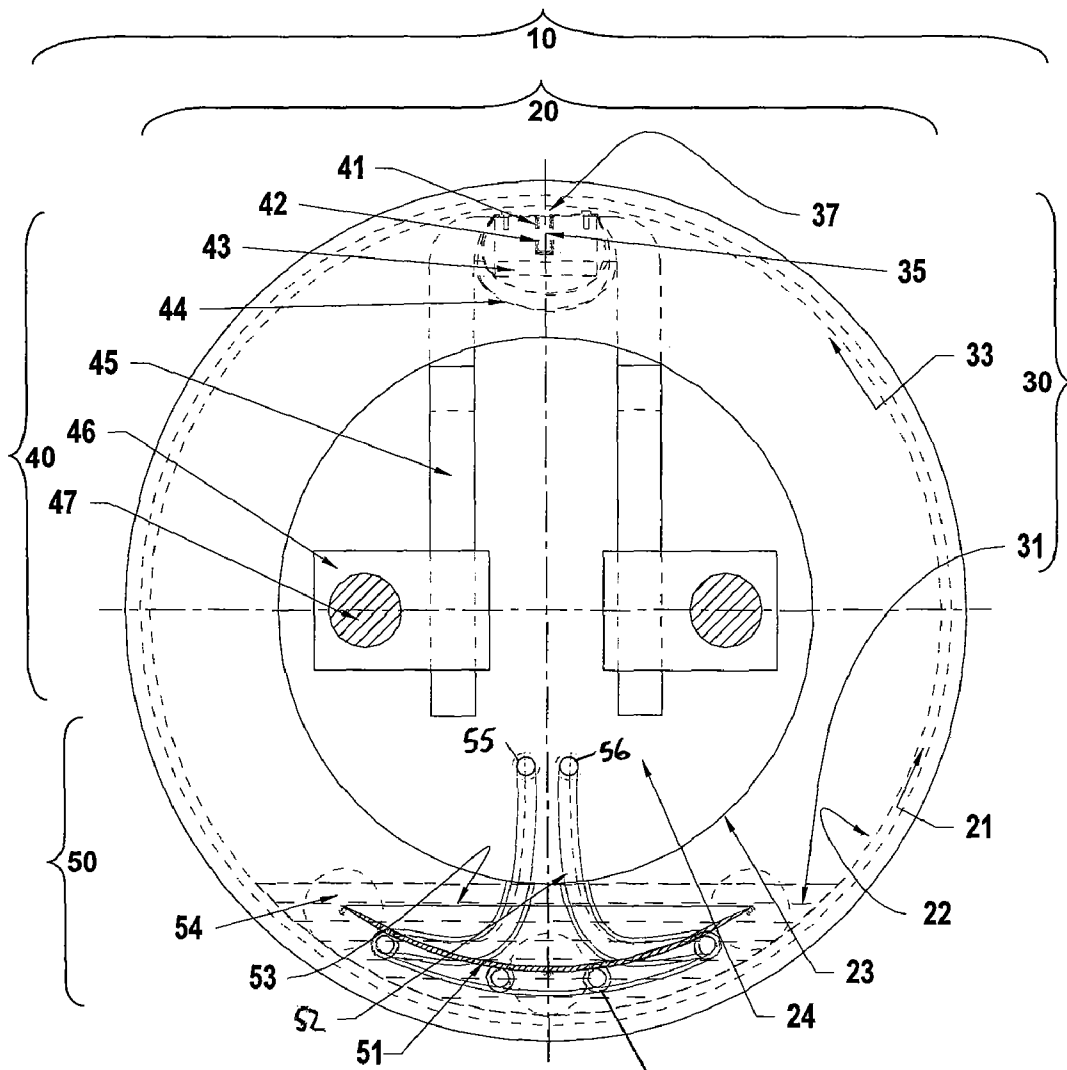


FIG 2

52

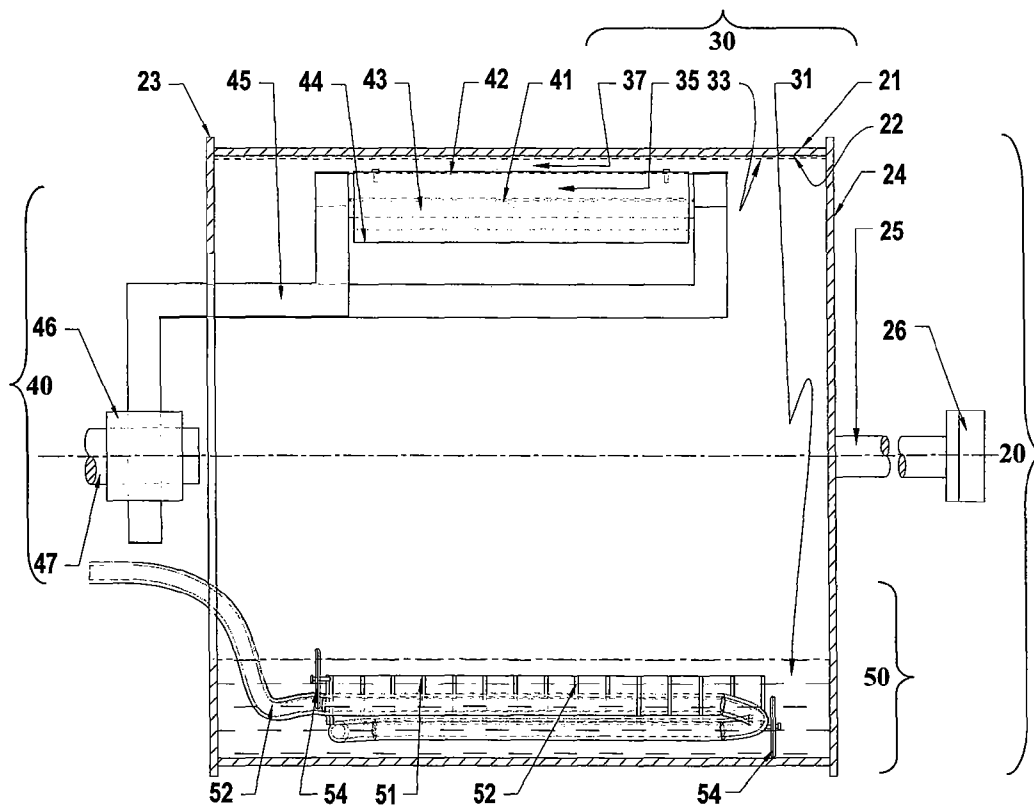


FIG 3

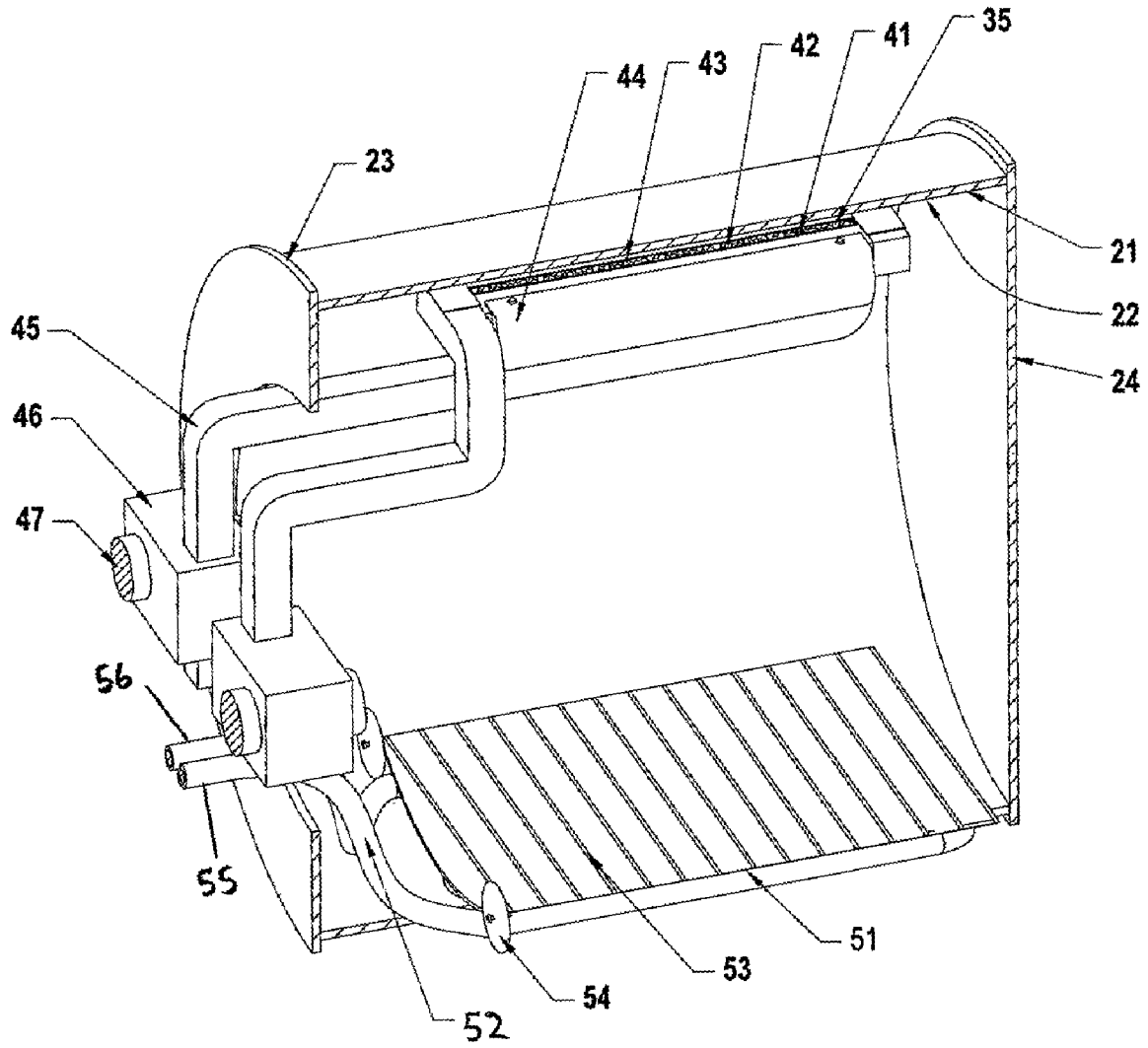


FIG 4

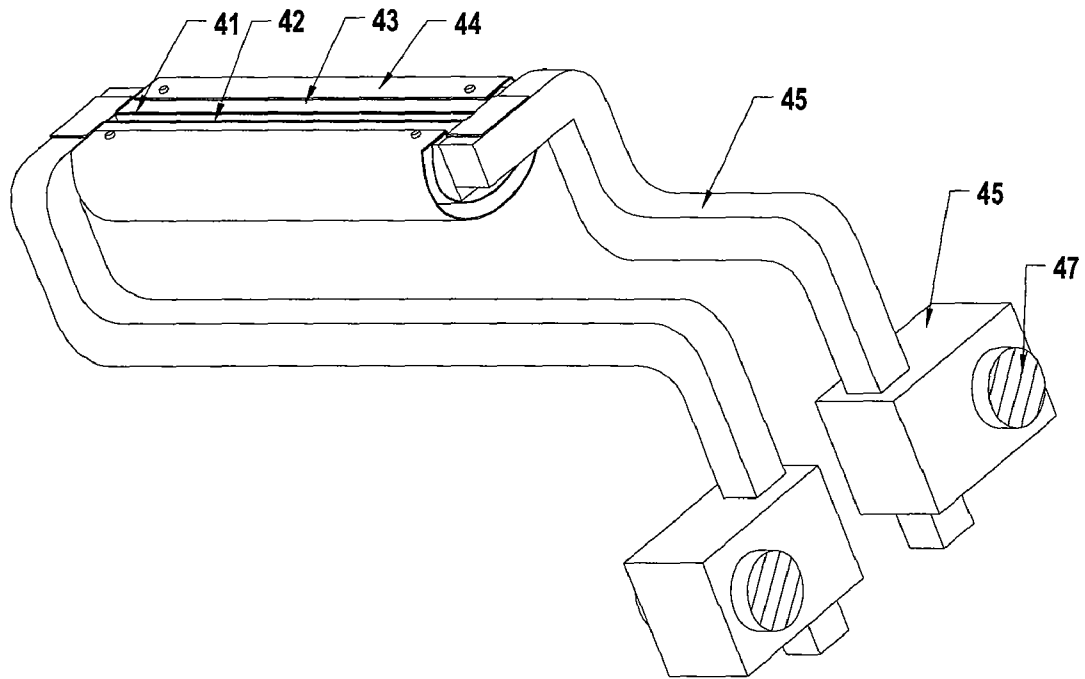


FIG 5

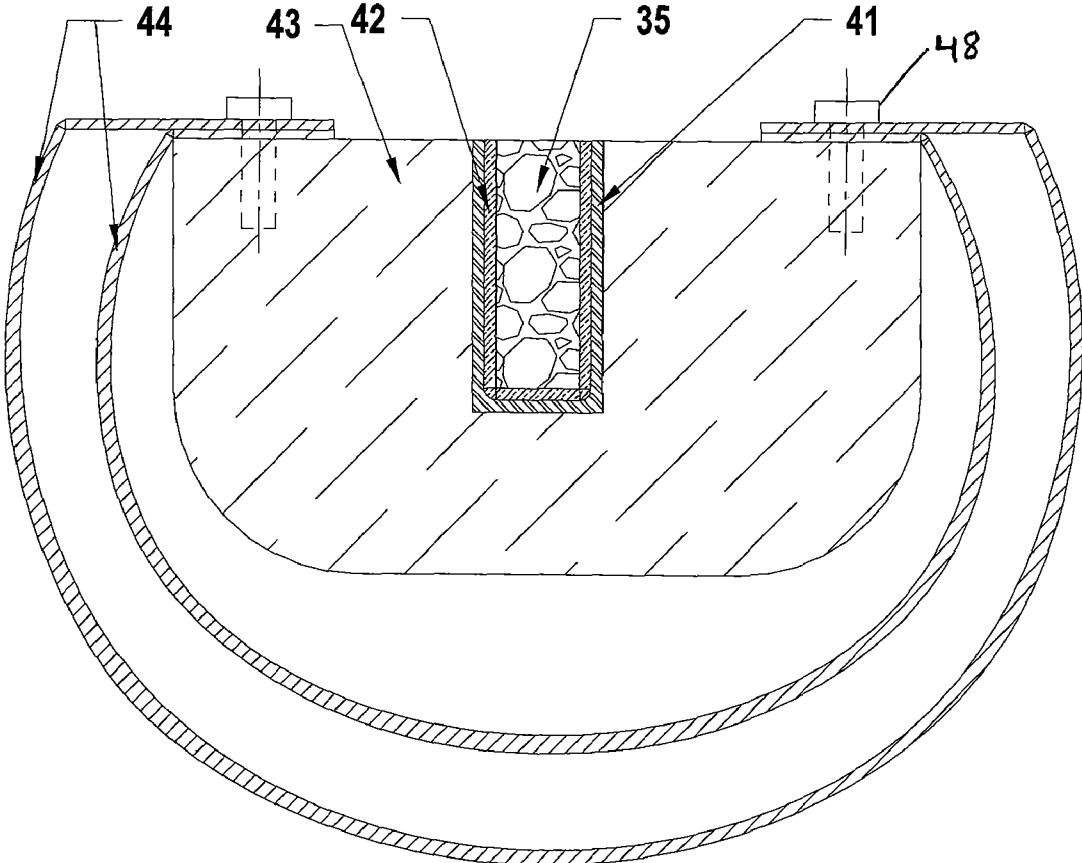


FIG 6

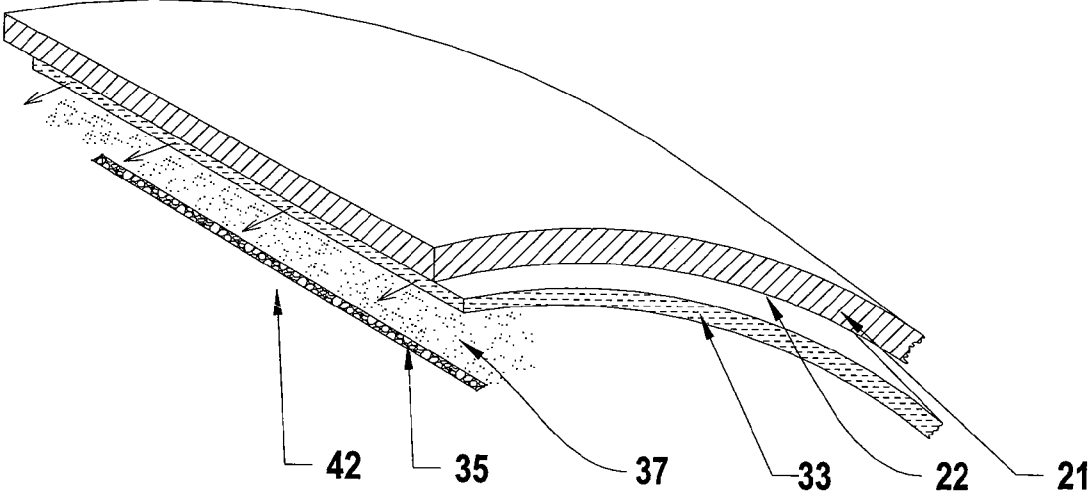


FIG 7

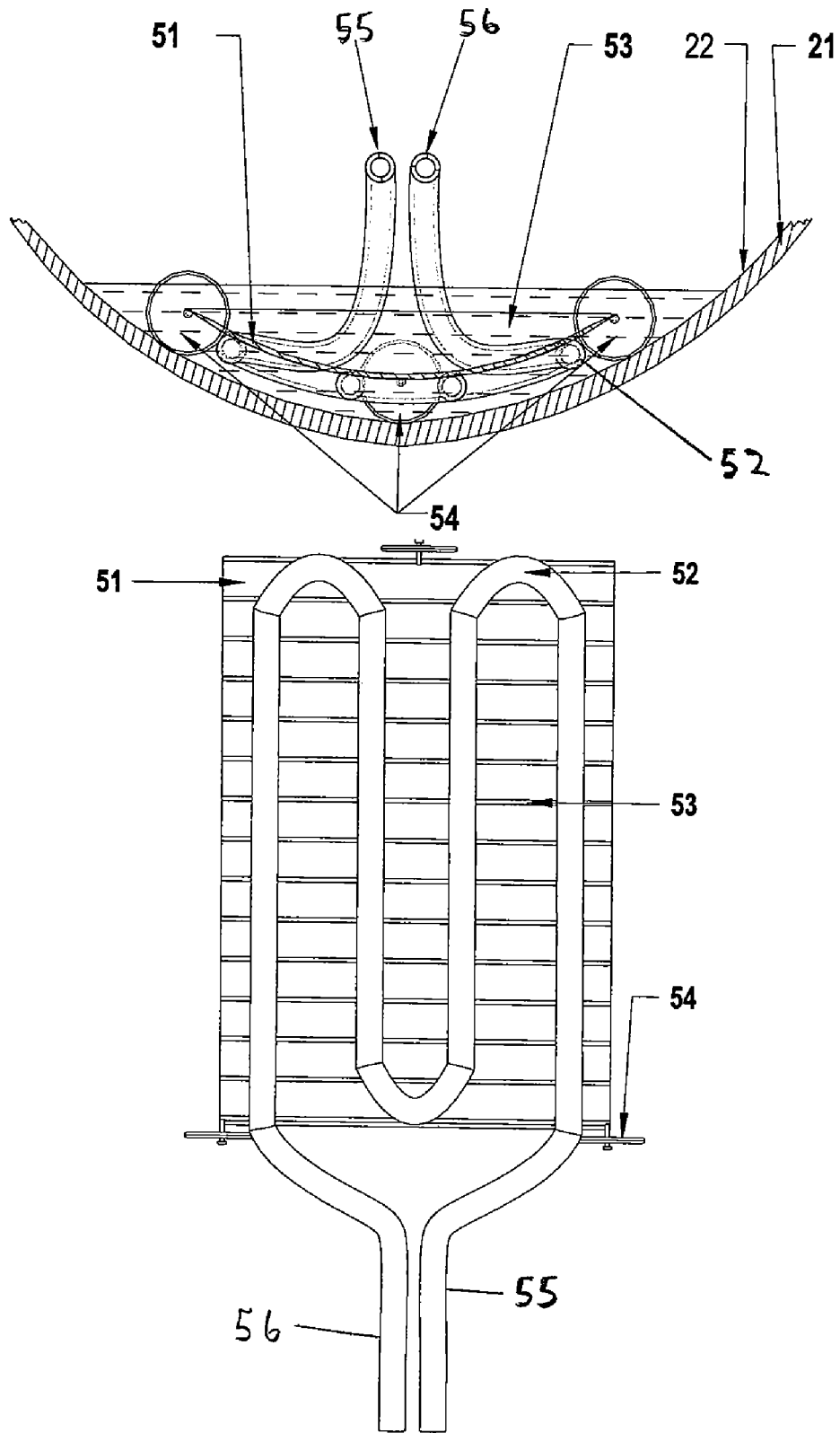


FIG 8

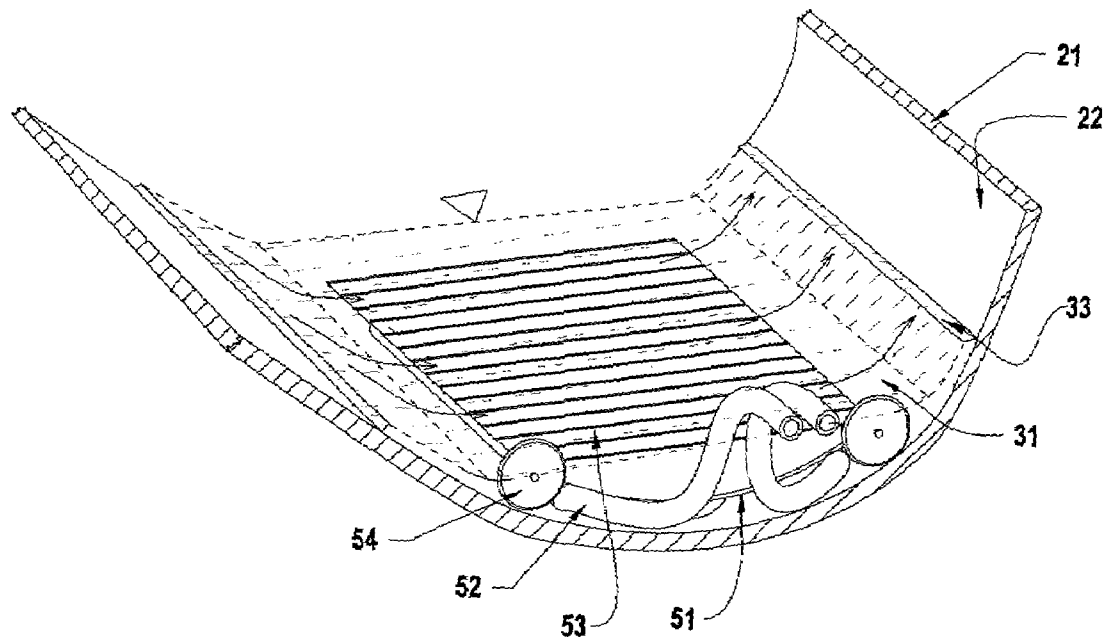


FIG 9

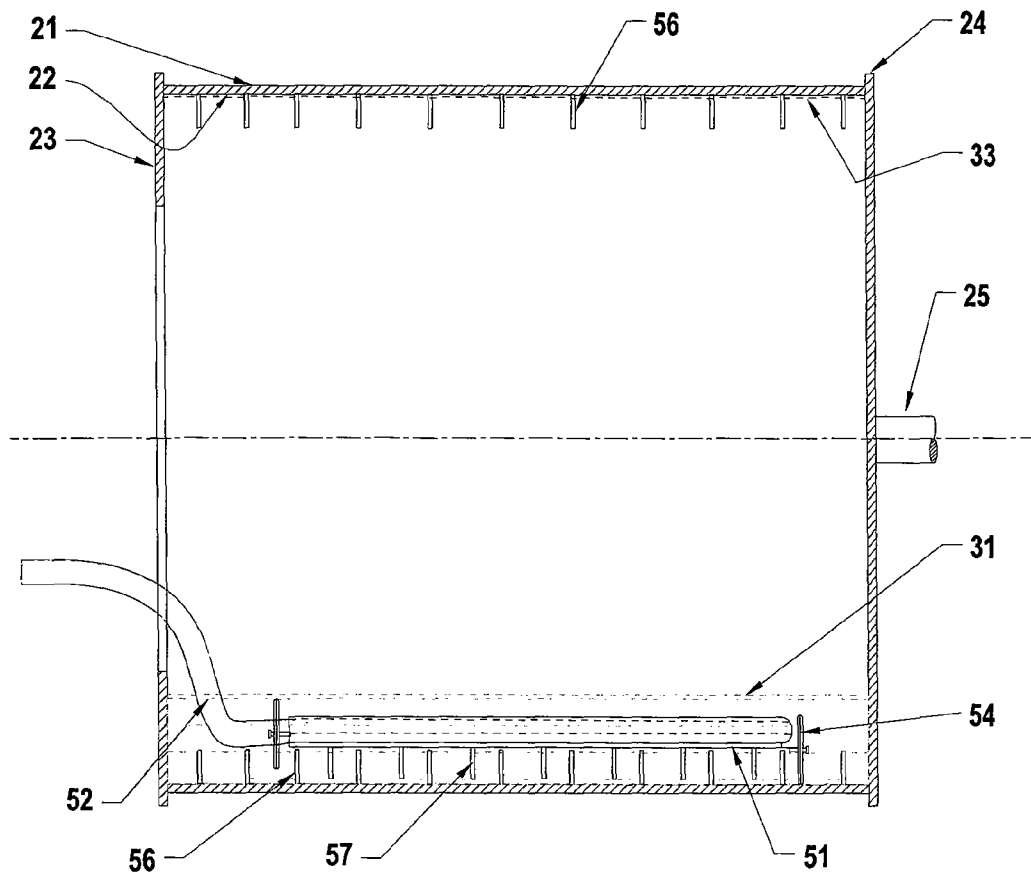


FIG 10

ONE-STEP METHOD FOR THE PRODUCTION OF NANOFLUIDS

STATEMENT OF GOVERNMENTAL SUPPORT

The United States Government has certain rights in this invention pursuant to Contract No. W-31-109-ENG-38 between the U.S. Department of Energy and the University of Chicago operating Argonne National Laboratory.

RELATION TO PRIOR PATENT APPLICATIONS

This non-provisional patent application is related to, and claims priority of, U.S. Provisional Patent Application No. 60/689,303 filed on Jun. 9, 2005, by instant inventors, which is hereby incorporated by reference in its entirety.

FIELD OF INVENTION

The invention relates to a method and system for the manufacture of nanofluids. More particularly the invention relates to an improved one-step method and system for the manufacture of nanofluids.

BACKGROUND OF THE INVENTION

Nanotechnology is a rapidly developing science that is leading to numerous useful applications in a variety of fields. A primary limitation in further applications of nanotechnology is the ability to efficiently and rapidly produce optimal size and quality of nanoparticles in the desired mediums for use, especially in relation to nanofluids, which are suspensions of nanometer-sized particles in a base fluid. It is very tedious and difficult to manufacture adequate quantities and qualities of nanofluids for the high demand which has developed.

Nanofluids have the potential to impact a myriad of industries and technologies including the area of advanced thermally conductive fluids. For example, when nanoparticles having high thermal conductivities are added to a base fluid the resulting nanofluid often has significantly higher thermal conductivities than that of the base fluid. For example, the heat-transfer capability of ethylene glycol increased by 40% when only 0.3 percent of 10 nanometer size of pure copper nanoparticles were suspended in it. Nanofluids have great potential as heat transfer fluids in many practical applications, such as different thermal systems, electronics, nuclear and biomedical instrumentation and equipment, transportation and industrial cooling, and general thermal management (heating and cooling).

Nanofluids are currently produced by two methods. One method, known as the two-step method, involves first producing the nanoparticles, either pure metals or typically metal oxides, which are then dispersed into the base fluid. In practice this approach has not worked well, particularly for metallic particles, since they tend to oxidize and agglomerate.

The second known method is a one-step preparation process in which nanocrystalline particles ("nanoparticles") are produced by direct evaporation and deposition onto a low vapor pressure liquid. Nanoparticles produced by this one-step method have tremendous potential. See, U.S. Pat. No. 6,221,275 issued to Choi et al. on Apr. 24, 2001, which is hereby by incorporated by reference in its entirety. However, the current one-step method is a short batch process with limited control over a number of important parameters including those that determine nanoparticle size within the formed nanofluid. Therefore, state of the art systems can only

produce nanofluids with nanoparticles equal to or greater than about 10-20 nm. There is a need in the art to produce nanofluids incorporating nanoparticles less than 10 nm.

One parameter that determines the size of the nanoparticles within the nanofluid is the chamber (system) pressure of the system. The chamber pressure is principally determined by the saturation vapor pressure of the base liquid in the vacuum chamber. As the liquid is heated, the chamber vapor pressure rises, and thus, it is critical to keep the liquid temperature low and as constant as possible throughout the process. Without sufficient cooling of the fluid, the temperature will rise mostly due to radiation heat input from the heater, as well as heat input from the impinging nanoparticles and heat gain from the surroundings. An increase in the temperature of the fluid can lead to evaporation of the fluid and other negative results. Therefore, controlling the temperature of the fluid and pressure within the system are very important.

Another important factor in determining the size of the nanoparticles within the nanofluid is the distance the evaporated nanoparticles need to travel before being absorbed by the fluid. Generally, the smaller the distance, the smaller number of gaseous atoms, molecules and particle collisions, and the smaller size of the nanoparticles (all other factors being equal).

For these reasons, it is difficult to make larger quantities of nanofluids or a nanofluid with a large concentration of desired size nanoparticles using current state of the art methods. Also because of the complex nature of the process, it is difficult to control nanoparticle size, the latter being very important.

SUMMARY OF THE INVENTION

In one embodiment of the invention, an improved one-step process and system for manufacture or production of nanofluids includes placing a base fluid, such as ethylene glycol or oil, in a rotating cylindrical drum situated in a vacuum chamber, part of the fluid forming a liquid pool in the bottom part of the drum.

The rotating axis of the drum is preferably horizontal, as a motor rotates the drum at a designated rotational speed. As the drum rotates, it wets and drags liquid filled in the bottom part of the drum along its inside cylindrical surface. At a proper speed a portion of the liquid forms a stream (liquid film) that is transported around the circumference of the inner surface of the drum.

A heater-boat-evaporator (HBE) is positioned in close proximity to the upper inside surface of the cylindrical drum covered by the thin liquid film. The nanoparticle-source, like a metal, evaporates at a given rate and the gaseous molecules rise away and upwards and forming nanoparticles that deposit onto the liquid film on the surface of the revolving drum forming a nanofluid. The liquid film (now a nanofluid) is further dragged with the drum and mixed with the liquid pool at the bottom of the drum. The liquid is then cooled by a heat exchanger-cooler (HXC) positioned within the liquid pool. In a steady-state process, the cooling capacity of the heat exchanger balances the heat input from the HBE and heat gains from the surroundings. The liquid is subsequently dragged back over the HBE where the cycle is repeated until desired nanoparticle concentration is achieved.

In a preferred form of the invention, the method and system includes: positioning the HBE that evaporates material evaporant close to the moving liquid film in the axial drum direction, instead of existing art of perpendicular to the drum axis, and with adjustable spacing of the HBE relative to the liquid film. The adjustable spacing of the evaporator is extremely important as it allows one to achieve an adjustable

particle deposition path which allows one to control the size of the nanoparticles within the created nanofluid. Generally, decreasing the distance between the HBE and the moving liquid film decreases the size of the nanoparticles incorporated into the nanofluid. This improved process allows that operator control the size of the incorporated nanoparticles in nanofluids and enables one to produce nanofluids with nanoparticles in the wide size range. The invented system allows production of nanofluids with nanoparticles is the size range of about 5-10 nm or less. Previously producing nanofluids incorporating uniform nanoparticle size even in range of 10-30 nm was extremely difficult if not totally unfeasible.

Positioning the HBE in the axial direction is also important as it substantially reduces the amount of time the fluid is subjected to heat radiating and emanating from the HBE. This positioning achieves a smaller fluid-film exposure over the heated source and thus reduces fluid evaporation and its vapor-pressure and in turn the nanoparticle size, but at the same time it provides larger liquid film area and thus larger nanoparticle source evaporation and deposition rate.

The temperature of the liquid can also be controlled by improved liquid cooling by substantially increasing drum rotational speed, improving the design of the heat exchanger that cools the base fluid and nanofluid with liquid nitrogen flow, controlling the cooler-plate-to-drum gap and adding cooling fins to the cooler-plate or even to the rotating drum if needed.

Additional improvement can include a liquid feed-in, inert gas purging and flashing, visual observation, and better process heating control, all of which further contribute to continuous, steady-state operation and control of temperature and pressure for production and optimization of desired nanofluid qualities and quantities.

BRIEF DESCRIPTION OF THE DRAWINGS

FIG. 1 illustrates a general nanofluid-production system-layout and additional improvements of the system;

FIG. 2 is a front view of one embodiment of the invented system;

FIG. 3 is a longitudinal cross-section of one embodiment of the system;

FIG. 4 is a longitudinal cross-section of one embodiment of the system in isometric view;

FIG. 5 is an isometric view of the heater boat-evaporator (HBE) assembly;

FIG. 6 illustrates a sectional view of one embodiment of the system incorporating an insulator and radiation shields for the HBE

FIG. 7 illustrates one embodiment of the system wherein the HBE is disposed longitudinally and adjacent to a segment of the rotating cylindrical drum and thin fluid film for manufacture of nanofluids;

FIG. 8 illustrates a cross-section and bottom view of a nitrogen heat exchanger-cooler (HXC) of one embodiment of the system;

FIG. 9 illustrates an isometric view of a nitrogen heat exchanger-cooler (HXC) of one embodiment of the system; and

FIG. 10 shows a rotating drum having internal disk-fins and matching disk-segment-fins on stationary HXC plate of one embodiment of the invention.

DETAILED DESCRIPTION OF THE PREFERRED EMBODIMENTS

The most preferred embodiments of the invented one-step nanofluid production system 10 are presented in FIGS. 1-10.

FIGS. 1 and 3, illustrates one embodiment of the invented one-step nanofluid production system 10 using a rotating drum assembly 20, nanofluid material assembly 30, a heater boat-evaporator (HBE) assembly 40, and a heat-exchanger-cooler (HXC) assembly 50 in a vacuum chamber 11 along with optional innovative accessories group 60-69, is shown. On FIGS. 2, 3 and 4 the most characteristic projections, orthogonal and isometric views of the rotating drum assembly 20 with nanofluid material assembly 30, including liquid pool 31 with thin film of liquid 33 and evaporant material 35, as well as the two critical assemblies, the heater-boat-evaporator (HBE) assembly 40 and heat-exchanger-cooler (HXC) assembly 50 are presented. The HBE assembly 40 is detailed on FIGS. 5 and 6, with the preferred functional positioning presented on FIG. 7, while the HXC assembly 50 is detailed on FIGS. 8 and 9 with additional option for exceptional cooling requirements on FIG. 10.

In this system 10 in FIG. 1, and in more details on FIGS. 2, 3 and 4, a liquid 31, which is initially a base fluid such as ethylene glycol or oil, is placed in a rotating cylindrical drum 21, which is most preferably disposed in a horizontal position. As the nanofluid production process, to be described, advances, nanoparticles will be deposited onto, and subsequently incorporated into, the liquid 31 (initially base fluid) and transform it into nanofluid. The liquid 31 begins the process as a base fluid and ends up as a nanofluid.

FIG. 1 illustrates a schematic side view of one embodiment of the nanofluid production system generally comprising: a vacuum chamber 11 with two access flanges 13 and 15, a cylindrical drum 21 having an annular front-end-plate 23, a solid back-endplate 24, an inner cylindrical surface 22 (See also FIGS. 2, 3 and 4), a shaft 25 attached to the back-end plate 24, an adjustable speed motor 26 (See also FIG. 3), a heater-boat-evaporator (HBE) assembly 40, a heat exchanger-cooler (HXC) assembly 50; an electric power means for supplying power to the HBE, a liquid nitrogen means for supplying cooling to the HXC, and appropriate instrumentation and control systems (not shown).

Optionally the system can incorporate an inert gas or nitrogen purging supply means having a purge gas reservoir 61, a purge supply tubing 62, and a valve 63 for supplying purging inert gas to the vacuum chamber 11.

An optional base fluid supply means having a base fluid reservoir 64, a base fluid supply tubing 65, and a base fluid valve 66, can also be utilized for delivering a base fluid to the lower section of the drum 21. The base fluid fills at least part of the lower section of the drum 21 creating a liquid pool 31 without opening the vacuum chamber 11. Yet another option may consist of drain reservoir 67, draining tubing 68 with valve 69, to facilitate removal of produced nanofluid without opening the vacuum chamber 11, see FIG. 1.

The cylindrical drum 21 is coupled to an adjustable speed motor 26 via a sealed shaft 25 (see FIGS. 1 & 3) which rotates the drum 21 at a user selected rotational speed. As the drum 21 rotates, it drags the liquid 31 along its inside cylindrical surface 22, forming a thin film of liquid 33 on the inner surface 22 of the drum 21 above the pool of liquid 31. See, FIGS. 1, 2, 3, and 7.

The cylindrical drum 21 contains annular front-end-plate 23, solid back-endplate 24 with shaft 25, and electrical motor 26. The annular front plate 23 prevents the liquid 31 from running out of the cylindrical drum 21 while at the same time allows positioning of the HBE assembly 40 and HXC assembly 50 within the rotating drum 21.

The drum has been described with an annular front plate and a solid back plate, however, a number of drum design can be envisioned and utilized as long as they allow rotation of the

fluid film, prevent excess fluid from spilling out of the system, and allow adjustable positioning of the HBE and HXC assemblies within the drum as needed.

As shown in FIGS. 1 to 6, a heater-boat-evaporator (HBE) assembly 40, generally comprising: a nanoparticle-source boat-evaporator 42 with heater 41, is placed in close proximity to the upper part of the inside cylindrical surface 22 of the drum 21 above the liquid pool 31. The boat evaporator 42 and the heater 41 are oriented along the drum's central longitudinal axis and positioned in close proximity to the liquid film 33 at the top of the rotating cylindrical drum 21, see also FIG. 7.

The heater 41 is connected to a power source (not shown) so that an evaporant material 35, i.e. the nanoparticle material source, in the boat 42 is heated and the evaporant material 35, such as a metal, is evaporated at a given rate. The resulting evaporated gaseous atoms rise upward and away from boat 42, the evaporation source, as shown in FIGS. 2, 3, 4 and 7, and after collisions form material vapor-nanoparticle mixture 37, and deposit as nanoparticles onto the surface and within the thin liquid film 33 forming a nanofluid mixture. The liquid film 33 rotates along the inside surface 22 of the rotating drum 21.

This liquid film 33, now a nanofluid, is further dragged with rotating drum 21 and mixed with the pool of liquid 31 at the bottom part of the drum 21. The liquid 31 is then cooled by the heat exchanger-cooler (HXC) assembly 50. The liquid 31 is subsequently dragged back over the HBE assembly 40, where the nanofluid production cycle is repeated continuously. The continuous deposition of nanoparticles increases their concentration in the liquid 31 until a desired concentration of nanoparticles in nanofluid is reached.

The heat exchanger-cooler assembly 50 cools the liquid 31 so that its corresponding partial pressure is low. The low pressure of the system 10 can be maintained in vacuum chamber 11 by evacuating an enclosed form of the system 10 to a desired pressure level using a vacuum pump system (not shown).

The boat evaporator 42 and heater 41 are vertically adjustable within the drum 21 as shown in FIGS. 2 to 5 in order to produce desired nanoparticle size distribution. Thus a user can adjust nanoparticle size distribution by modifying the proximity of the boat evaporator 42 to the liquid film 33, as shown in FIGS. 2 to 5.

The HBE assembly 40 preferably incorporates a long, narrow boat evaporator 42 (shown in FIGS. 3-5 and 7). This prolonged and narrow boat evaporator 42 allows exposure of a wider segment of the thin liquid film 33 to enhance deposition rate of evaporated metal and nanoparticles being created and deposited to the thin liquid film 33, all this while minimizing the liquid film's 33 heat exposure over the HBE assembly 40 due to its longitudinal position with regard to the moving liquid film 33 as opposed to the central position in the existing art. As shown in FIG. 7 the long boat evaporator 42 is positioned along the longitudinal axis of the drum 21 which allows the boat 42 to cover a large surface area of the film 33, even though the boat 42 is itself narrow to minimize the moving fluid film heating and evaporation.

In preferred embodiment shown in FIGS. 1-4 the liquid film 33 is maintained at low pressure by evacuation of gaseous and vapor content of the vacuum chamber 11 in which the cylindrical drum 21 with liquid pool 31, nitrogen heat exchanger-cooler assembly 50, and nanoparticle source load 35 in boat 42 with heater 41 are situated.

The vacuum chamber 11 may be purged and flushed with an inert gas like argon or nitrogen from a purged reservoir 61 in FIG. 1 to displace humid air and thus minimize adverse oxygen and water vapor content.

An additional embodiment of the above process may be achieved when a sufficiently low pressure (close to the triple-point pressure of fluid 31) is reached, a valve to the vacuum pump (not shown), is closed so that the closed form of system 10 with the cylindrical drum 21 is filled with the base fluid 31, and the base-fluid vapor pressure above the base fluid 31 is maintained at the saturation vapor pressure corresponding to the fluid temperature.

Vacuum Chamber

The vacuum chamber 11, see FIG. 1, is covered and sealed with two flanges 13 and 15 and connected with a two stage vacuum pump system (not shown) capable of establishing and maintaining extremely low chamber pressure in fractions of millitorr range (1 millitorr=0.1333225 Pascal) The system vacuum is established by opening the vacuum system valve (not shown) and running the first and the second stage of commercially available vacuum pumps until a desired vacuum level is achieved. After a desired vacuum level is achieved the vacuum system valve is closed and the vacuum pumps are additionally turned on only if and when needed to compensate for eventual leaks or if different vacuum level is desired. The system vacuum is also maintained by controlling the corresponding fluid saturation temperature as explained elsewhere.

It should be noted that the various tubes and other components that enter or exit the vacuum chamber can be sealed using various sealing means known in the art, as to maintain the vacuum during operation.

Cylindrical Drum Assembly

The cylindrical drum assembly 20 consists of a cylindrical drum 21 with an inner cylindrical surface 22, an annular front-end plate 23 and a back-end plate 24. In FIGS. 1 and 3, the shaft 25 is attached to the back-end plate 24, however, the shaft 25 could be attached to the drum in a variety of other arrangements.

The motor 26 drives the shaft 25 which in turn rotates the drum 21 causing the liquid 31 to be dragged along the inside of the cylindrical surface 22 of the drum 21. At a desired rotational speed a thin film of liquid 33 is formed along the circumference of the inner surface 22 of the drum 21.

It should be noted that the drum 21 could be supported and rotated in a number of other ways known in the art including but not limited to the use of rollers (not shown) or other rotational means. The drum 21 rotation speed could be adjusted, preferably from several to hundreds of revolutions per minute (RPM), by using a commercially available variable-speed motor (form a number of different motors known in the art).

Heater-Boat-Evaporator (HBE) Assembly

In one embodiment the heater-boat evaporator (HBE) assembly 40 comprises: a heater element 41, a boat evaporator 42, and a nanoparticle source or evaporant material 35. FIG. 6 illustrates a cross-section of one preferred embodiment of the HBE assembly. The boat evaporator 42 is located above and in thermal (and preferably physical) contact with the heater element 41. The heater element 41 heats the boat evaporator 42, which in turns heats the evaporant material 35 until the evaporant (nanoparticle source, like copper or other metal) 35 begins to evaporate.

The HBE assembly 40 is oriented along the central longitudinal axis of the cylindrical drum 21 and the boat evaporator 42 is positioned in close proximity to the thin liquid film 33 at the top section of the cylindrical drum 21 as shown in FIG. 7

As mentioned earlier, the distance from the evaporator boat 42 to the liquid film 33 is critical, as it is a crucial parameter

in determining the size distribution of the nanoparticles incorporated in the nanofluid, the preferable distance being in range of about 5-55 mm. The HBE assembly **40** is preferably positioned so that the evaporator boat **42** is in close proximity below and faces the liquid film **33** so that when the evaporant material **35** evaporates towards the liquid film **33** and thus forms material vapor-nanoparticle mixture **37** that readily incorporates into the liquid film **33** above.

The heater element **41** can be a selected from a number of heaters known in the art. Preferably the heater element **41** is constructed of a high temperature electrical conductor, more preferably molybdenum or titanium.

The evaporator boat **42** can be made of a number of materials including but not limited to ceramics and other dielectric materials having high melting temperatures.

HBE Insulation and Shielding

As shown in FIG. **6** it is advantageous to insulate the heater **41** using an insulation medium **43** to minimize heat losses, (i.e. heat flow to the base liquid **31** and fluid film **33**), thereby stabilizing the system for well controlled and continuous (i.e. steady-state) nanofluid production. The insulation medium **43** can include various well known materials including ceramic and high-temperature foam insulation.

Preferably the heater **41** is surrounded by the insulation on three sides, the fourth side of the heater preferably being in contact with the boat evaporator **42** as shown in FIG. **6**. The insulation can be connected to the heater using a variety means known in the art including but not limited to physical and chemical attachment means.

Preferably the insulation is covered with a radiation shield material **44** (i.e. shiny metal foil) to minimize radiation heat loss. Since the system is maintained in a vacuum, the majority of heat transfer is a result of thermal radiation. Therefore, of the radiation shielding **44** minimize the transfer of heat from the heater **41** to the liquid **31** and the liquid film **33**, thus supplying most of the heating power to the boat evaporator **42** and in turn to nanoparticle source material **35** to enhance the nanoparticle source evaporation rate. A number of radiation shielding layers can be employed, preferably two or more. Preferably the radiation shielding material is a polished stainless steel or similar high-temperature foil. It is important to maintain a small gap between the radiation shielding and the insulation to prevent conduction heat transfer losses. Pins **48** or other means can be used to keep the shielding in place.

Support Means for the HBE Assembly

The adjustable HBE assembly **40** includes the support means as a salient part of at least one embodiment of the invention because it allows one to adjust proximity between boat evaporator **42** and moving fluid film **33**, and thus controls the evaporation rate and distribution size of the nanoparticles **37** incorporated into the nanofluid **31**.

FIGS. **2** to **5** illustrate one embodiment of the HBE support means (HBE-SM). In the illustrated embodiment the HBE-SM generally comprises two main rod-conductors **47**, two adjusting guide couplers or connectors **46** and two adjusting rod-conductors **47**. The main rod-conductors **47** are anchored to the side flange **15** of the chamber **11** (see FIG. **1**).

The adjusting guide coupler **46** connects the main rod-conductors **45** to the adjusting rod-conductors **45** as shown in the FIGS. **2** to **5**. The rod-conductors can be attached to the HBE in a variety of physical and chemical connection means known in the art. A suitable connecting means is by standard threaded fasteners.

The adjusting rod-conductors **45** are preferably connected to the adjusting guide couplers **46** so that the rod-conductors **45** can be adjusted in a preferable vertical direction to control

the distance between HBE assembly **40** and liquid film **33**. The main rod-conductors **47** are wired to a DC power source (not shown).

In one embodiment the guide coupler(s) **46** has(have) a central aperture, the adjusting rod-conductors **45** are running through the central aperture, wherein the central aperture snugly fits the rod-conductors in its central aperture thereby being supported by the main rod-conductors **47**.

A variety of other adjustable support means for the HBE assembly **40** can be envisioned as long as they support the HBE and allow one to adjust the distance between the HBE assembly **40**, more specifically the boat evaporator **42** and the liquid film **33**.

The Evaporant Material (Nanoparticle Source)

The evaporant material **35** can be any material capable of being evaporated to form desired type of nanoparticles. Preferably the evaporant **35** is a metal, metal oxide, an alloy or other compound, more preferably the evaporant is a metal like copper, silver or similar material.

Heat Exchanger-Cooler Assembly

The heat exchanger-cooler (HXC) assembly **50** is positioned within the lower section of the cylindrical drum **21**, and is preferably located within the liquid pool **31**. The heat exchanger-cooler assembly **50** cools the liquid **31** before it is dragged over the HBE assembly **40** again, allowing for a continuous nanofluid production cycle. The HXC assembly **50** quickly cools the liquid **31** and balances any increases in temperature due to HBE heating and other heat gains. The HXC assembly **50** has very important function because it keeps the liquid **31** and liquid film **33** cool thus preventing evaporation of the liquid.

The HXC assembly **50** is preferably designed to use liquid nitrogen as a cooling source. The improved heat exchanger-cooler assembly **50** is a salient part of at least one embodiment of the invention because it allows sufficient cooling of the liquid **31**, preventing evaporation of the liquid and allowing continuous production of nanofluids.

FIGS. **8** to **10** illustrate a preferred novel heat exchanger-cooler assembly **50** generally comprising: a cooler-plate **51** incorporating cooling tubing (coil) **52**, and optional cooling fins **53**, as illustrated in see FIGS. **8** and **9**. The cooling plate **51** is cooled by a cooling coil **52** (preferably in very good physical and thermal contact with the cooling plate **51**) which is positioned within the lower part of rotating drum **21**.

The coils (cooling tubing) **52** are cooled by a coolant, preferably liquid nitrogen that flows through the coils. The coolant can be selected from a number of coolants known in the art, is preferably liquid nitrogen.

The cooled coil **52** remove heat from the cooling plate **51** which in turn cools (removes heat from) the liquid **31**, removing any heat gained by the liquid **31** as it passes through the system. Liquid nitrogen is preferably discharged continuously from a commercial storage cylinder (not shown) or other liquid nitrogen source, through the coils **52**,

The inlet coil **55** can be attached to a nitrogen source via an isolated inlet tube (not shown) and discharged via an outlet tube **56**. Preferably the used nitrogen exiting the outlet tube is recycled. Optionally, a temperature sensor, preferably a thermocouple (not shown) is imbedded in the liquid pool **31**, and nitrogen flow through the cooling coil is controlled via adjustable valve (not shown) to maintain a desired liquid temperature and in turn to maintain desired system pressure. The length of each cooler fin **53** is designed to allow recirculation flow within liquid pool **31**. The fins **53** are spaced along the length of the cooling plate **51** as shown in FIGS. **8** and **9**. The number of fins **53** and their width and spacing can be adjusted

as needed. The fins 53 serves as a heat sink extended surfaces and help efficiently remove and disperse the heat absorbed by the cooling plate 51.

The heat exchanger preferably has a number of rollers 54 which provide a gap between the cooling plate 51 and the inside of the drum surface 22. The gap of about 5-15 mm is preferable to achieve the most favorable cooling of liquid 31.

An alternate improved innovative heat exchanger-cooler assembly 50 for application with extreme cooling requirements is presented on FIG. 10. To increase flow of liquid 31 over the innovative disk-segment form fins 57 attached to the cooling plate 51, and thus substantially increase the cooling of liquid 31, special disk fins 56 are attached to the inside cylindrical surface 22 of the rotating drum 21. This innovative design with rotating fins 56 substantially increases the dragging of the liquid pool 31 and thus commensurate increase of convective heat transfer over the stationary cooler fins 57.

Base Liquids

The base liquids can be a variety of liquids, however, low vapor pressure liquid are preferred because liquids with lower vapor pressures are less likely to be evaporated by the HBE assembly, however, a variety of liquids can be employed.

Suitable base liquids included but are not limited to: oils, tri-ethylene glycol, ethylene glycol and other industrial fluids. Vacuum oils and ethylene glycol mixtures being preferred base liquids.

Power Supply

A commercial DC electrical power supply (not shown) of low voltage (preferably less than about 20V) and high current (preferably up to about 200 A) is attached via electrical conductors (not shown), the main-rod conductors 47, guide-couplers 46 and adjusting rod-connectors 45, to the heater element 41 of the HBE assembly 40.

Standard line AC electrical supply is used to power electrical motor 26 for rotation of drum 21, vacuum pump drives/ motors and related instrumentation (not shown).

Determining Nanoparticle Size Distribution and Concentration

Nanoparticle size distribution and concentration is determined using different laboratory methods with appropriate samples of the produced nanofluids. The measured nanoparticle size distribution and concentration as function of the production process parameters, such as (1) vacuum system and chamber pressures, (2) drum rotation speed, (3) boat evaporator temperature, (4) cooling liquid temperature, (4) boat evaporator to liquid film separation distance, and (5) nanoparticle deposition time, will be used to calibrate the required process parameters of the one-step nanofluid production apparatus for desired quality, nanoparticle size distribution and concentration in nanofluid.

Alternate Embodiments

A variety of additional steps can also be taken to effectuate improved thermal control of the system 10 (see FIG. 1), including without limitation: adjusting the rate of rotation of the cylindrical drum 21 to control desired properties of the nanofluid 31, such as: increasing rotation of the drum 21 to higher rotational speeds up to several hundreds revolution per minute to minimize exposure of the liquid film 33 and thus minimize its heating and evaporation which in turn decreases vapor pressure and nanoparticle size distribution and increases nanofluid production rate; and improved nitrogen cooler heat exchanger design, among others. The boat heater

41 can be controlled by a temperature sensor and an automated feedback-controlled system (not shown).

Furthermore, purging the system 10 with an inert gas, like argon or nitrogen gas before starting any nanofluid production to minimize oxygen and water vapor remains from air and also after a manufacturing cycle to prevent any ambient air leaks into the system.

In yet a further preferred embodiment shown in the annular front-end-plate 23, is made of two halves (not shown) to be attached with fasteners and sealed to the drum 21. This design allows for smaller annular opening facilitated with detachable two halves of the annular front-end-plate 23. This will accommodate placement of a larger form of the HBE assembly 40 and the HXC assembly 50 into the rotating drum assembly 20 and drum 21 and thus provide for a larger quantity of the liquid 31 thus resulting in faster nanofluid production rate.

Having described the basic concept of the invention, it will be apparent to those skilled in the art that the foregoing detailed disclosure is intended to be presented by way of example only, and is not limiting. Various alterations, improvements, and modifications are intended to be suggested and are within the scope and spirit of the present invention. Additionally, the recited order of the elements or sequences, or the use of numbers, letters or other designations therefore, is not intended to limit the claimed processes to any order except as may be specified in the claims. All ranges disclosed herein also encompass any and all possible sub-ranges and combinations of sub-ranges thereof. Any listed range can be easily recognized as sufficiently describing and enabling the same range being broken down into at least equal halves, thirds, quarters, fifths, tenths, etc. As a non-limiting example, each range discussed herein can be readily broken down into a lower third, middle third and upper third, etc. As will also be understood by one skilled in the art all language such as "up to," "at least," "greater than," "less than," and the like refer to ranges which can be subsequently broken down into sub-ranges as discussed above. Accordingly, the invention is limited only by the following claims and equivalents thereto.

All publications and patent documents cited in this application are incorporated by reference in their entirety for all purposes to the same extent as if each individual publication or patent document were so individually denoted.

The invention claimed is:

1. A nanofluid production system comprising:
 - a cylindrical drum having an upper section, a lower section and a cylindrical inner surface;
 - a rotation means for rotating the cylindrical drum;
 - a liquid, wherein at least a portion of the liquid forms a liquid pool in the lower section of the drum;
 - an evaporant material;
 - a heater-boat-evaporator (HBE) means for evaporating the evaporant material;
 - an adjustable HBE support means for supporting and adjustably positioning the HBE in proximity to the inner surface of the upper section of the cylindrical drum, wherein the HBE support means is oriented along the longitudinal axis of the drum;
 - a heat exchanger means for removing heat from the liquid, wherein at least part of the heat exchanger means is positioned within the liquid pool;
 - a vacuum means for maintaining a vacuum within the system, and;
 - a power means for supplying power to the HBE means, the rotation means, the vacuum means, and the heat exchanger means.

2. The nanofluid production system of claim 1, wherein the HBE comprises: one or more boat evaporators, and a heater element, wherein the one or more boat evaporators are positioned over, and in thermal contact with, the heater element, and wherein the evaporant material is positioned within the one or more boat evaporators.

3. The nanofluid system of claim 1, wherein the HBE support means allows the HBE to be vertically adjusted in relation to the inner surface of the upper section of the cylindrical drum.

4. The nanofluid production system of claim 1, further comprising: an insulation means for insulating the HBE.

5. The nanofluid production system of claim 1, further comprising a radiation shielding means for shielding the liquid from heat radiation emanating from the HBE.

6. The nanofluid production system of claim 1, wherein the liquid is an industrial fluid.

7. The nanofluid production system of claim 1, wherein the liquid contains at least one of the liquids selected from the group consisting of: oils, ethylene glycol and tri-ethylene glycol.

8. The nanofluid production system of claim 1, wherein the evaporant material is a metal or metal oxide.

9. The nanofluid production system of claim 1, wherein the evaporant material is a metal or metal alloy.

10. The nanofluid production system of claim 1, wherein the cylindrical drum is horizontally oriented.

11. The nanofluid production system of claim 1, wherein the cylindrical drum has an annular front-end-plate and a back-endplate.

12. The nanofluid production system of claim 1, wherein the cylindrical drum has an annular front-end-plate and a back-endplate, and wherein the means for rotating the drum comprises a motor attached to a shaft, the shaft attached to the solid back-endplate of the drum, wherein the motor drives, the shaft which in turn rotates the cylindrical drum.

13. The nanofluid production system of claim 1, wherein the heat exchanger means comprises a liquid nitrogen cooled heat exchanger.

14. The nanofluid production system of claim 1, wherein the heat exchanger means has a cooling plate, and one or more cooling coils in thermal contact with the cooling plate.

15. The nanofluid production system of claim 1, wherein the heat exchanger means has a cooling plate and wherein the heat exchanger means has a multitude of rollers which provide a gap between the cooling plate and the inner surface of the drum.

16. The nanofluid production system of claim 1, wherein the heat exchanger means contains a series of fins that act as an extended heat sink.

17. The nanofluid production system of claim 1, further comprising a fluid removal means for removing fluid from the drum.

18. The nanofluid production system of claim 1, wherein upon rotation the liquid is dragged along the inner surface of the cylindrical drum by forces resulting from surface adhesion and the rotation of the drum, when a desired rotational speed is achieved at least a portion of the liquid is dragged along the circumference of the inner cylindrical surface creating a rotating liquid film along the inner surface.

19. The nanofluid production system of claim 1, wherein upon rotation the liquid is dragged along the inner surface of the cylindrical drum by forces resulting from surface adhesion and the rotation of the drum, when a desired rotational speed is achieved at least a portion of the liquid is dragged along the circumference of the inner cylindrical surface creating a rotating liquid film along the inner surface, and wherein the evaporant material is heated to a temperature sufficient for a portion of the evaporant material to evaporate and form nanoparticles, the formed nanoparticles being incorporated into the rotating liquid film forming a nanofluid.

20. A method for producing nanofluids comprising:

providing the system of claim 1,

rotating the cylindrical drum of the system at a speed equal to or exceeding the speed required to drag a portion of the liquid in the liquid pool along the circumference of the inner cylindrical surface creating a rotating liquid film along the inner surface of the drum;

adjustably positioning the HBE in proximity to a portion of the rotating liquid film located along the inner surface of the drum above the liquid pool;

heating the evaporant material to a temperature sufficient to cause a portion of the evaporant material to evaporate into nanoparticles, the nanoparticles being incorporated into the rotating liquid film forming a nanofluid;

cooling the liquid, and;

removing the nanofluid from the drum.

21. The method of claim 20, wherein the average size of the nanoparticles in the nanofluid is between about 5-50 nanometers.

22. The method of claim 20, wherein the average size of the nanoparticle in the nanofluid is less than about 5 nanometers.

23. The method of claim 20, further comprising the list of process parameters to be calibrated for achieving desired distribution size and concentration of nanoparticles within the nanofluid.

* * * * *